

PLUMBING LEGEND			
SYMBOL	DESCRIPTION	SYMBOL	DESCRIPTION
	BALL VALVE		DIRECTION OF SLOPE
	BUTTERFLY VALVE		DIRECTION OF FLOW
	GATE VALVE		PIPE UP
	ANGLE GATE VALVE		PIPE DOWN
	OS & Y GATE VALVE		PIPE DROP
	OS & Y GATE VALVE WITH TAMPER SWITCH		TOP CONNECTION — BRANCH LINE
	SOLENOID VALVE		BOTTOM CONNECTION — BRANCH LINE
	LUBRICATED PLUG VALVE		FIRE MAIN
	CHECK VALVE		AUTOMATIC WET SPRINKLER
	PRESSURE REDUCING VALVE		COLD WATER
	RELIEF VALVE		HOT WATER (120°F)
	VACUUM RELIEF VALVE		HOT WATER CIRC (120°F)
	PRESSURE & TEMPERATURE RELIEF VALVE		HOT WATER (140°F)
	AUTOMATIC AIR VENT		HOT WATER CIRC (140°F)
	CIRCUIT SETTER		SANITARY SEWER
	BACKWATER VALVE		STORM DRAIN
	DOUBLE DETECTOR CHECK VALVE ASSEMBLY		PIPING BELOW GRADE
	DOUBLE CHECK VALVE ASSEMBLY		WASTE
	REDUCED PRESSURE BACKFLOW PREVENTER		VENT
	PRESSURE SWITCH		ROOF DRAIN PIPING
	FLOW ALARM		OVERFLOW DRAIN PIPING
	FLOW SWITCH		PUMPED DISCHARGE
	UNION		INDIRECT DRAIN LINE
	STRAINER		INDUSTRIAL WASTE
	STRAINER WITH BLOW OFF		GREASY WASTE
	PIPE ANCHOR		NATURAL GAS (7"W.C.)
	PIPE ALIGNMENT GUIDE		MEDIUM PRESSURE GAS (2#)
	EXPANSION JOINT		PROCESS COMPRESSED AIR
	FLEXIBLE CONNECTOR		EXISTING PIPE
	CAP OR PLUG		PIPING TO BE REMOVED
	BLIND FLANGE		
	CONCENTRIC REDUCER		
	ECCENTRIC REDUCER		
	AQUASTAT		
	WATER HAMMER		
	PRESSURE GAUGE WITH COCK		
	THERMOMETER		
	CLEANOUT PLUG		
	FLOOR CLEANOUT		
	YARD CLEANOUT		
	TEST TEE		
	WALL HYDRANT		
	HOSE BIBB		
	YARD HYDRANT		
	THRUST BLOCK		
	FIRE DEPARTMENT CONNECTION		
	FIRE RISER		
	FIRE DEPARTMENT VALVE		
	FIRE DEPARTMENT VALVE CABINET		
	SIEMESE FIRE DEPT. CONN.		
	FIRE ALARM BELL		
	FLOOR DRAIN		
	FLOOR SINK		
	HUB DRAIN		
	FIRE RISER		

ABBREVIATIONS	
⊠	SQUARE FEET
⊙	POINT OF CONNECTION
&	AND
Ⓐ	AT
#	POUNDS
#	NUMBER
/	PER
ABV	ABOVE
ADA	AMERICANS WITH DISABILITIES ACT
AFF	ABOVE FINISHED FLOOR
AFG	ABOVE FINISHED GRADE
AP	ACCESS PANEL
ARCH	ARCHITECT
AS	AUTOMATIC FIRE SPRINKLER SYSTEM
BEL	BELOW
BFV	BUTTERFLY VALVE
BTU	BRITISH THERMAL UNIT
BV	BALL VALVE
CD	CONDENSATE DRAIN
CFH	CUBIC FEET PER HOUR
CI	CAST IRON
CLG	CEILING
CO	CLEANOUT
CONTR	CONTRACTOR
CONT	CONTINUATION
CV	CHECK VALVE
CW	COLD WATER
DN	DOWN
DFU	DRAINAGE FIXTURE UNIT
HWR	HOT WATER RECIRC
DIA	DIAMETER
DSN	DOWNSPOUT NOZZLE
D	DRAIN
DSP	DRY STANDPIPE SYSTEM
DWV	DRAINAGE WASTE AND VENT
EXIST	EXISTING
ELEC	ELECTRICAL
FA	FLOW ALARM
FCO	FLOOR CLEANOUT
FDC	FIRE DEPARTMENT CONNECTION
FDVC	FIRE DEPARTMENT VALVE CABINET
FH	FIRE HYDRANT
FIN	FINISHED
FL	FLOOR
FM	FROM
FO	FUEL OIL
FPS	FEET PER SECOND
FT	FEET
FU	FIXTURE UNIT
G	GAS
GD	GARBAGE DISPOSER
GPH	GALLONS PER HOUR
GPM	GALLONS PER MINUTE
GV	GATE VALVE
HD	HUB DRAIN
HP	HORSEPOWER
HW	HOT WATER

ABBREVIATIONS	
IAPMO	INTERNATIONAL ASSOCIATION OF PLUMBING AND PLUMBING OFFICIALS
ICBO	INTERNATIONAL CONFERENCE OF BUILDING OFFICIALS
I.E.	INVERT ELEVATION
LBS	POUNDS (UNIT OF FORCE)
MAX	MAXIMUM
MBH	THOUSANDS BTU/HR
MECH	PLUMBING
MFG	MANUFACTURER
MIN	MINIMUM
MH	MANHOLE
NFPA	NATIONAL FIRE PROTECTION ASSOCIATION
OFCI	OWNER FURNISHED CONTRACTOR INSTALLED
OW	OIL WASTE
POC	POINT OF CONNECTION
PLBG	PLUMBING
PS	PRESSURE SWITCH
PSI	POUNDS PER SQUARE INCH
PT	PRESSURE TEMPERATURE TRAP (PETE'S PLUG)
PV	PLUG VALVE
RJ.&C	ROUGH IN AND CONNECT
RPBFP	REDUCED PRESSURE PRINCIPLE BACKFLOW PREVENTER
SF	SQUARE FEET
SHT	SHEET
SOV	SHUT-OFF VALVE
SPKR	SPRINKLER
TB	THRUST BLOCK
TMV	THERMOSTATIC MIXING VALVE
TP	TRAP PRIMER
TS	TAMPER SWITCH
TT	TEST TEE
TYP	TYPICAL
UN	UNION
VB	VACUUM BREAKER
V	VENT
V	VOLTS
VTR	VENT THROUGH ROOF
W	WASTE
WCO	WALL CLEANOUT
W/	WITH
WGT	WEIGHT
WSP	WET STANDPIPE
YB	YARD BOX

GENERAL NOTES	
1. ALL WORK AND MATERIAL SHALL BE IN ACCORDANCE WITH DIVISION 22 SPECIFICATIONS.	
2. AS-BUILT RECORD DOCUMENTS: AT PROJECT CLOSEOUT, CONTRACTOR SHALL SUBMIT DETAILED INSTALLATION DRAWINGS, CHANGE ORDERS AND SPECIFICATION CHANGES TO ARCHITECT FOR APPROVAL. REFER TO SPECIFICATIONS FOR ADDITIONAL DETAILS.	
3. CONTRACTOR TO COORDINATE INSTALLATION OF GAS SERVICE WITH LOCAL GAS COMPANY, CONTACT ENGINEERING DEPARTMENT. ALL EXTERIOR GAS PIPING SHALL BE PAINTED.	
4. DETAILED INVESTIGATION OF EXISTING CONDITIONS ARE PART OF THE CONTRACT WORK. VISIT THE JOB SITE PRIOR TO BID. REVIEW AVAILABLE EQUIPMENT LAYOUTS, ASSEMBLY DRAWINGS AND INSTALLATION SCHEDULES.	
7. CONTRACTOR SHALL COORDINATE ALL UTILITY LINES EXITING OR ENTERING BUILDING WITH DIVISION 22 SPECIFICATIONS AND CIVIL ENGINEER'S UTILITY PLAN DRAWINGS AND OTHER TRADES.	
8. BARRIER FREE REQUIREMENTS: PROVISIONS HAVE BEEN DESIGNED TO PROVIDE FIXTURES IN ACCORDANCE WITH A.D.A., ANSI AND STATE OF CALIFORNIA REGULATIONS. CONTRACTOR SHALL COMPLY WITH ALL REQUIREMENTS AND REPORT TO ARCHITECT OR OWNER'S REPRESENTATIVE WHEN FIELD CONDITIONS PREVENT CORRECT INSTALLATION.	
9. DOMESTIC HOT WATER IS SUPPLIED TO LAVATORIES AT A MAXIMUM TEMPERATURE OF 110°F IN PUBLIC AREAS.	
10. ALL STORM DRAIN & OVERFLOW DRAIN PIPING ABOVE FLOOR & CEILING SHALL BE DWV COPPER (TRANSITION FROM DWV COPPER TO CAST-IRON BELOW GRADE).	
11. SEE ARCHITECTURAL DWGS FOR EXACT LOCATION OF THE PLUMBING FIXTURES AND EQUIPMENTS.	
12. PROVIDE S.O.V. ON THE COLD WATER BRANCHES, WALL CLEANOUTS FOR SINKS, LAVATORIES WATER CLOSETS AND SERVICE SINKS PER CITY STANDARDS.	

PLUMBING DRAWING LIST	
P.01	PLUMBING LEAD SHEET
P.02	PLUMBING SCHEDULES
P2.0	PLUMBING PLAN - ENLARGED
P2.1	PLUMBING PLANS
P2.2	PLUMBING ROOF PLAN

PICO BRANCH LIBRARY

2201 Pico Blvd.
Santa Monica, CA 90404

PROJECT

KoningEizenbergArchitecture

1454 29th St, Santa Monica, CA 90404
310.828.6131 info@kearch.com
310.828.0719 fax www.kearch.com

ARCHITECT'S PROJECT NO.

1001

ARCHITECT

All designs, ideas, arrangements and plans indicated by these drawings are the property and copyright of the Architect and shall neither be used on any other work nor be disclosed to any other person for any use whatsoever without written permission.

Koning Eizenberg Architecture and/or its principals and employees waives any and all liability or responsibility for problems that may occur when these plans, drawings, specifications, and/or designs are followed without the professional's guidance with ambiguities, or conflicts which are alleged.

GLUMAC

617 W. 7th Street, Suite 500
Los Angeles, CA 90017
T: 213.239.8866 F: 213.239.8816
www.glumac.com
Job No.: 06.11.01192
Contact: E. LEE

engineers for a sustainable future™

CONSULTANT

City of
Santa Monica
Architecture Services

1437 4TH STREET, SUITE 300
SANTA MONICA, CA 90401
TEL: (310) 458-2205
FAX: (310) 399-1541
architecture@smgov.net

SUBMITTED BY: _____ DATE: _____ 20__

APPROVED BY: _____
Miriam Mulder
Architecture Services Manager
CITY OF SANTA MONICA
DEPARTMENT OF PUBLIC WORKS

REVIEWED BY: _____ DATE: _____ 20__

REVIEWED BY: _____ DATE: _____ 20__

REVIEWED BY: _____ DATE: _____ 20__

CITY CLIENT

⚠	07/16/12		BULLETIN 1
	06/21/12		PLAN CHECK 2
	05/07/12		PLAN CHECK 1
⚠	03/06/12		ADDENDUM 3
⚠	02/21/12		ADDENDUM 2
NO.	DATE	BY	DESCRIPTION

REVISIONS

ISSUE

100% CONSTRUCTION DOCUMENTS

DATE
07/16/2012

DRAWING NO. 6693

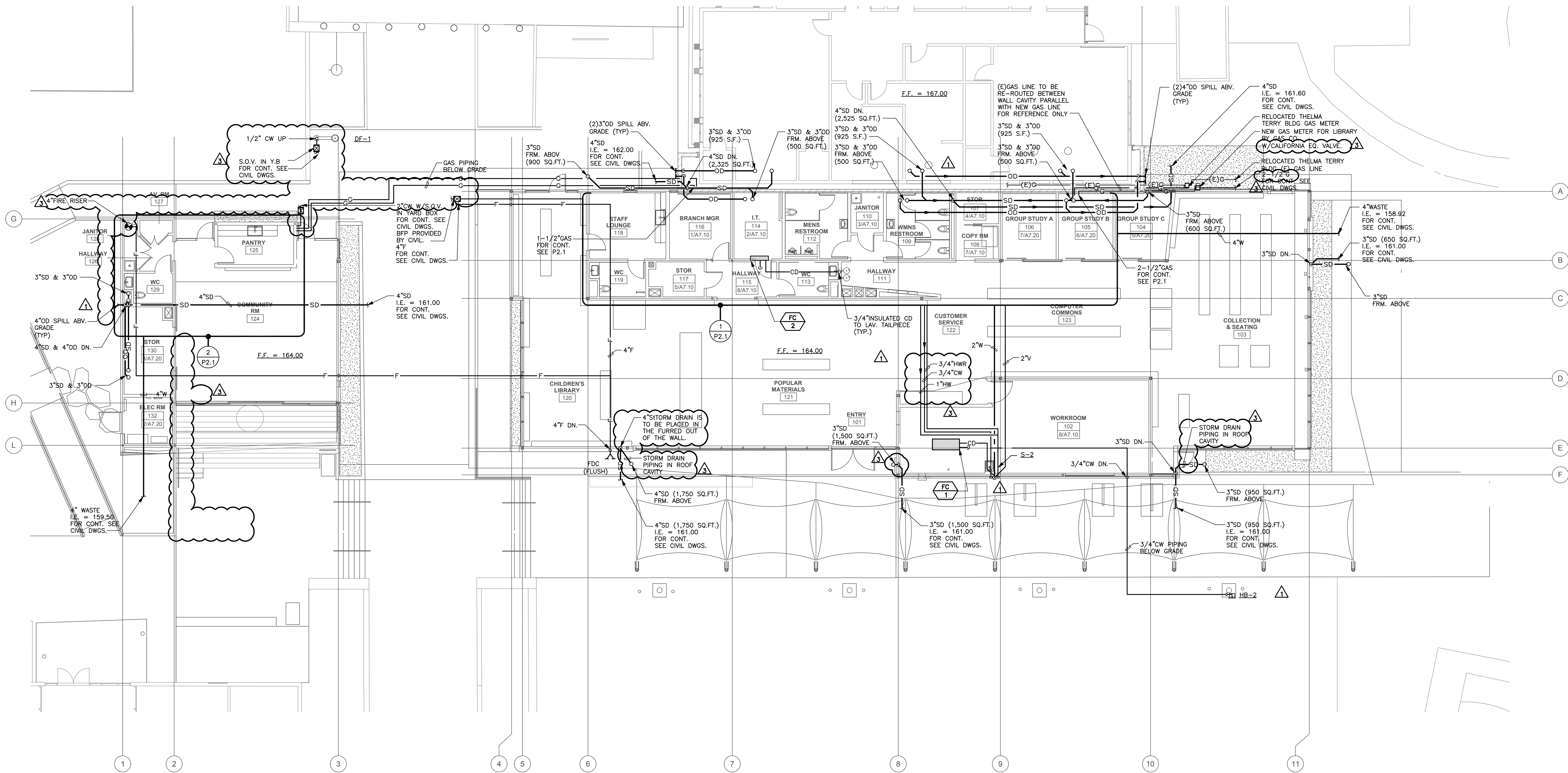
SHEET TITLE
PLUMBING
LEAD SHEET

SHEET NO.

P0.1

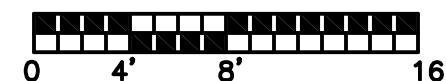
GENERAL NOTES

A. THE DESIGN OF THE UNDERFLOOR AIR DISTRIBUTION SYSTEM IS BASED ON A SEALED, AIRTIGHT UNDERFLOOR PLENUM. ALL CONSTRUCTION JOINTS AT PLENUM BOUNDARIES AND PLENUM DIVIDING PARTITIONS SHALL BE SEALED AIRTIGHT. ALL PENETRATIONS FOR PIPES, CONDUIT AND OTHER SERVICES SHALL BE SEALED AIRTIGHT. PLENUMS SHALL BE TESTED FOR LEAKAGE PER THE COMMISSIONING SPECIFICATIONS. PLENUMS THAT DO NOT MEET THE LEAKAGE CRITERIA PER THE SPECIFICATIONS SHALL BE RESEALED AND RETESTED UNTIL THEY PASS. REFER TO THE ARCHITECTURAL DRAWINGS FOR CONSTRUCTION DETAILS AND ADDITIONAL INFORMATION.



1 PLUMBING PLAN

SCALE: 1/8"=1'-0"



PROJECT

KoningEisenbergArchitecture
1454 29th St, Santa Monica, CA 90404

310.828.6131 info@kearch.com
310.828.0719 fax www.kearch.com

ARCHITECT'S PROJECT NO.

1001

ARCHITECT

All designs, ideas, arrangements and plans indicated by these drawings are the property and copyright of the Architect and shall neither be used on any other work nor be disclosed to any other person for any use whatsoever without written permission.

Koning Eisenberg Architecture and/or its principals and employees waives any and all liability or responsibility for problems that may occur when these plans, drawings, specifications, and/or designs are followed without the professional's guidance with ambiguities, or conflicts which are alleged.



GLUMAC

617 W. 7th Street, Suite 500
Los Angeles, CA 90017
T: 213.239.8866 F: 213.239.8816
www.glumac.com
Job No.: 06.11.0102
Contact: E. LEE

engineers for a sustainable future™

CONSULTANT

City of
Santa Monica
Architecture Services

1437 4TH STREET, SUITE 300
SANTA MONICA, CA 90401
TEL: (310) 458-2205
FAX: (310) 398-1541
architecture@smgov.net

SUBMITTED BY: DATE: 20

APPROVED BY: DATE: 20

APPROVED BY: DATE: 20

APPROVED BY: DATE: 20

APPROVED BY: DATE: 20

APPROVED BY: DATE: 20

APPROVED BY: DATE: 20

APPROVED BY: DATE: 20

APPROVED BY: DATE: 20

APPROVED BY: DATE: 20

APPROVED BY: DATE: 20

APPROVED BY: DATE: 20

APPROVED BY: DATE: 20

APPROVED BY: DATE: 20

APPROVED BY: DATE: 20

APPROVED BY: DATE: 20

APPROVED BY: DATE: 20

APPROVED BY: DATE: 20

APPROVED BY: DATE: 20

APPROVED BY: DATE: 20

APPROVED BY: DATE: 20

APPROVED BY: DATE: 20

APPROVED BY: DATE: 20

APPROVED BY: DATE: 20

APPROVED BY: DATE: 20

APPROVED BY: DATE: 20

APPROVED BY: DATE: 20

APPROVED BY: DATE: 20

APPROVED BY: DATE: 20

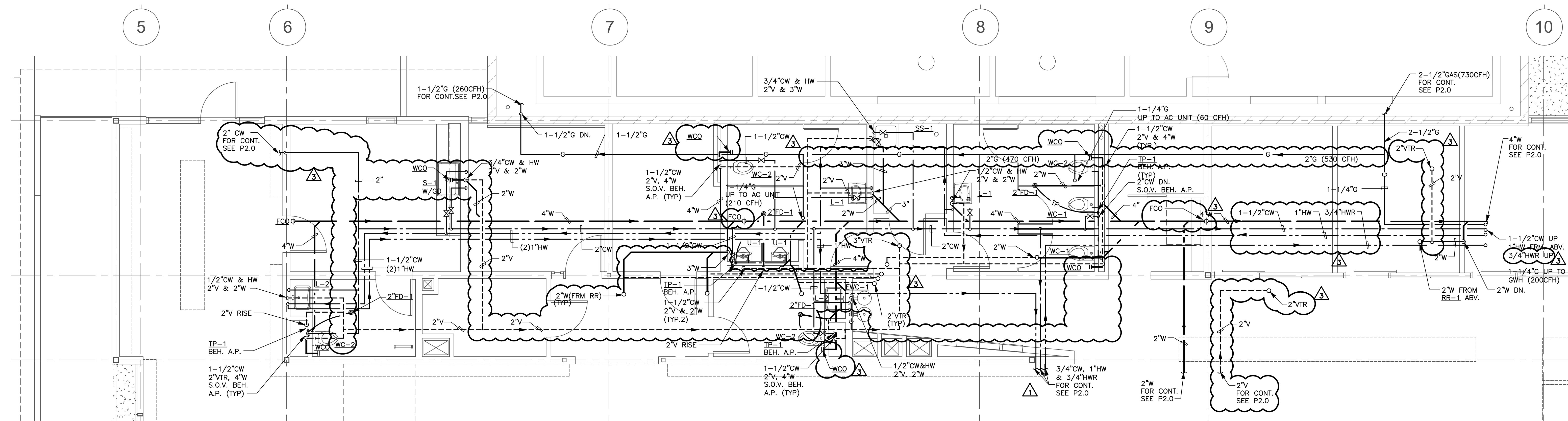
APPROVED BY: DATE: 20

APPROVED BY: DATE: 20

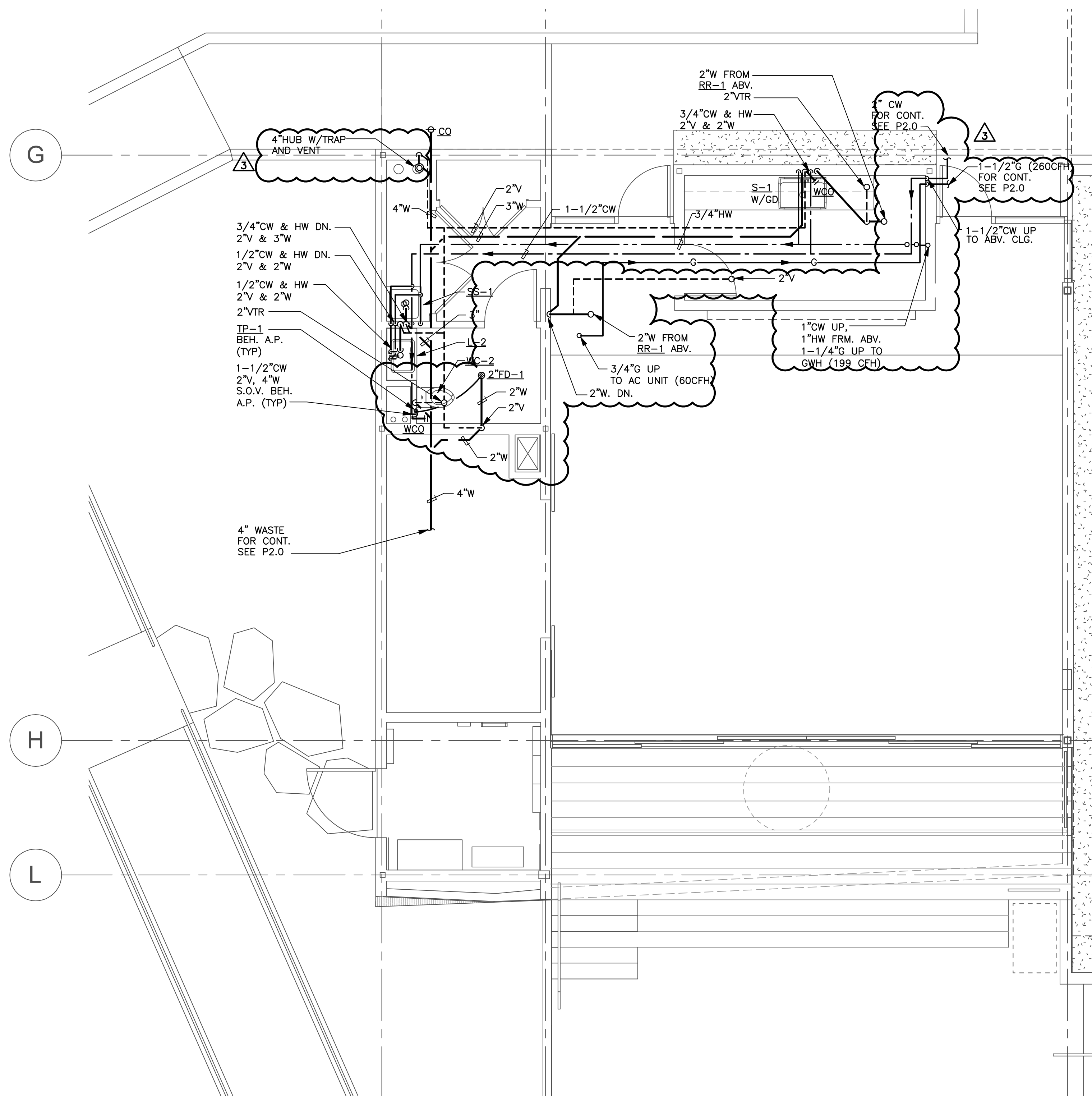
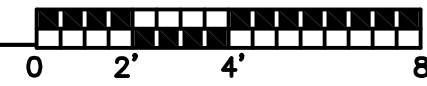
APPROVED BY: DATE: 20

APPROVED BY: DATE: 20

APPROVED BY: DATE: 20



1 PLUMBING PLAN
SCALE: 1/4"=1'-0"

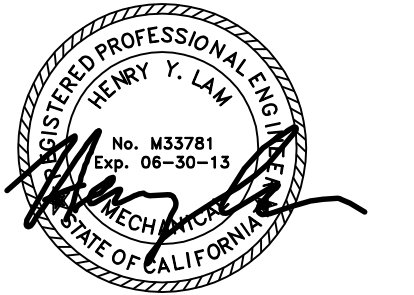


2 PLUMBING PLAN
SCALE: 1/4"=1'-0"



All designs, ideas, arrangements and plans indicated by these drawings are the property and copyright of the Architect and shall neither be used on any other work nor be disclosed to any other person for any use whatsoever without written permission.

Koning Eisenberg Architecture and/or its principals and employees waives any and all liability or responsibility for problems that may occur when these plans, drawings, specifications, and/or designs are followed without the professional's guidance with ambiguities, or conflicts which are alleged.



GLUMAC

617 W. 7th Street, Suite 500
Los Angeles, CA 90017
T. 213.239.8866 F. 213.239.8816
www.glumac.com
Job No. 06.11.0102
Contact: E. LEE

engineers for a sustainable future™

CONSULTANT

City of
Santa Monica
Architecture Services

1437 4TH STREET, SUITE 300
SANTA MONICA, CA 90401
TEL: (310) 458-2205
FAX: (310) 399-1541
architecture@smgov.net

SUBMITTED BY: DATE: 20

APPROVED BY: DATE: 20
Miriam Mulder
Architecture Services Manager

CITY OF SANTA MONICA
DEPARTMENT OF PUBLIC WORKS

REVIEWED BY: DATE: 20

REVIEWED BY: DATE: 20

REVIEWED BY: DATE: 20

CITY CLIENT

NO.	DATE	BY	DESCRIPTION
1	07/16/12		BULLETIN 1
2	06/21/12		PLAN CHECK 2
3	05/07/12		PLAN CHECK 1
4	03/06/12		ADDENDUM 3
5	02/21/12		ADDENDUM 2

REVISIONS

ISSUE

100% CONSTRUCTION DOCUMENTS

DATE

07/16/2012

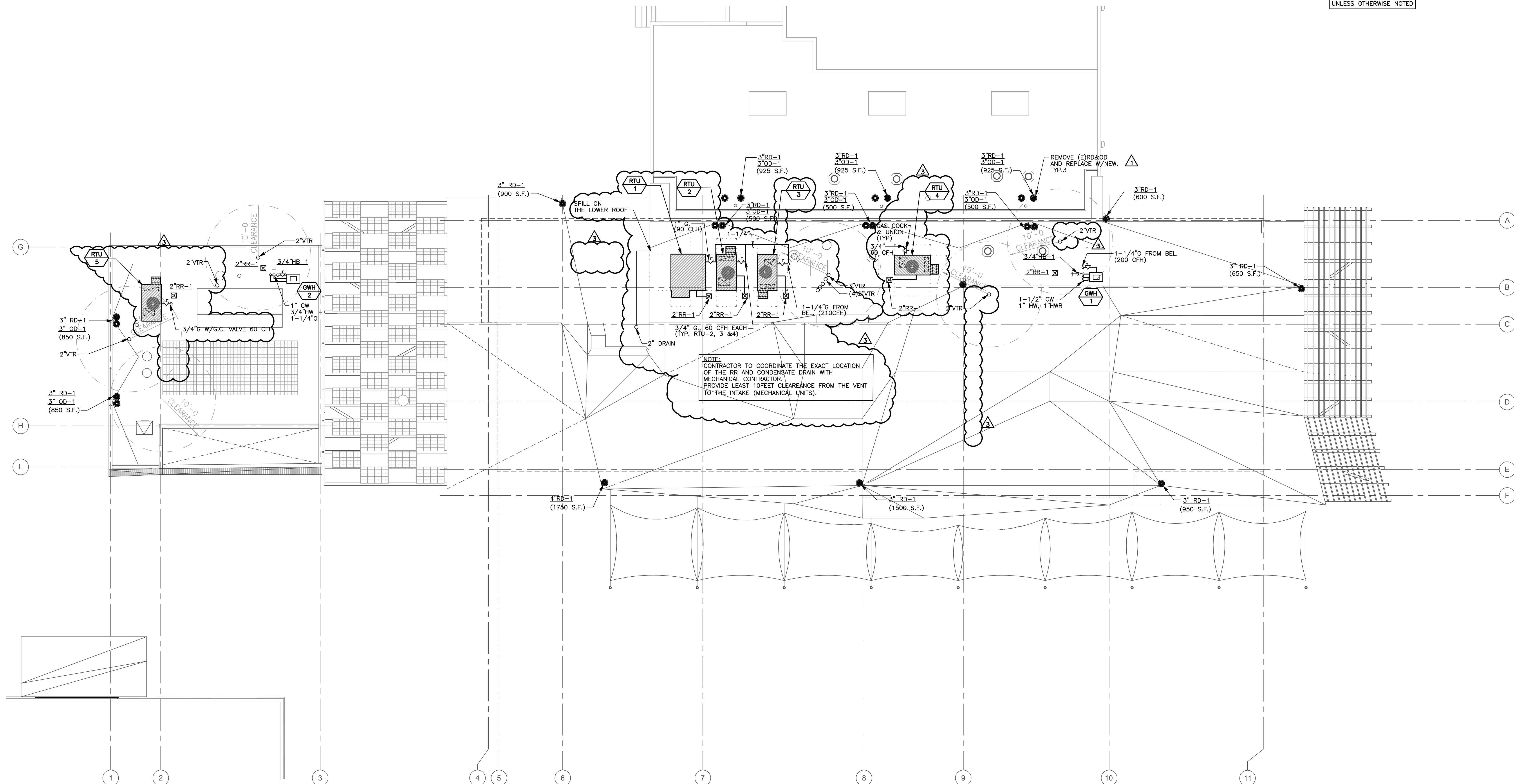
DRAWING NO. 6693

SHEET TITLE

ENLARGED
PLUMBING
PLANS

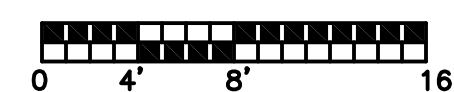
SHEET NO.

P2.1



1 PLUMBING ROOF PLAN

SCALE: 1/8"=1'-0"



NOTE:
ALL PIPING SHALL SLOPE
@ 2% PER 100 FT.
UNLESS OTHERWISE NOTED

P2.2